

Stereo Mixer as a table top model or for 19" rack installation with digital sampler and equalizer in a special multifunction DJ version.

Equipped with:

2 microphone inputs: one mic input for DJ use with fader, front panel XLR jack, two-way equalizer and talkover facility. The second mike input with level control and rear 1/4" jack.

3 stereo inputs with faderstart facility, switchable PHONO (RIAA)/ LINE.

1 stereo LINE input, switchable TAPE/LINE.

A crossfader circuit allows quick fading between any two of the four stereo channels. Two assign switches are provided for the crossfader selection.

The built-in microprocessor-controlled digital sampler is used for recording and single or repetitive replay of an audio sample of up to 12 sec. The replay speed is variable and by this the pitch of the sound can be changed. For sampling a front panel START/STOP button as well as a MODE switch with different functions are provided.

Further features of this versatile mixer: A 7 way stereo equalizer (to be switched on/off), an adjustable headphones output for pre-fader listening, 20 step LED VU display at the mixer output, a stereo master switchable to mono as well as a BNC socket for a console lamp.

WARNING!

THIS UNIT USES LETHALLY HIGH VOLTAGE.

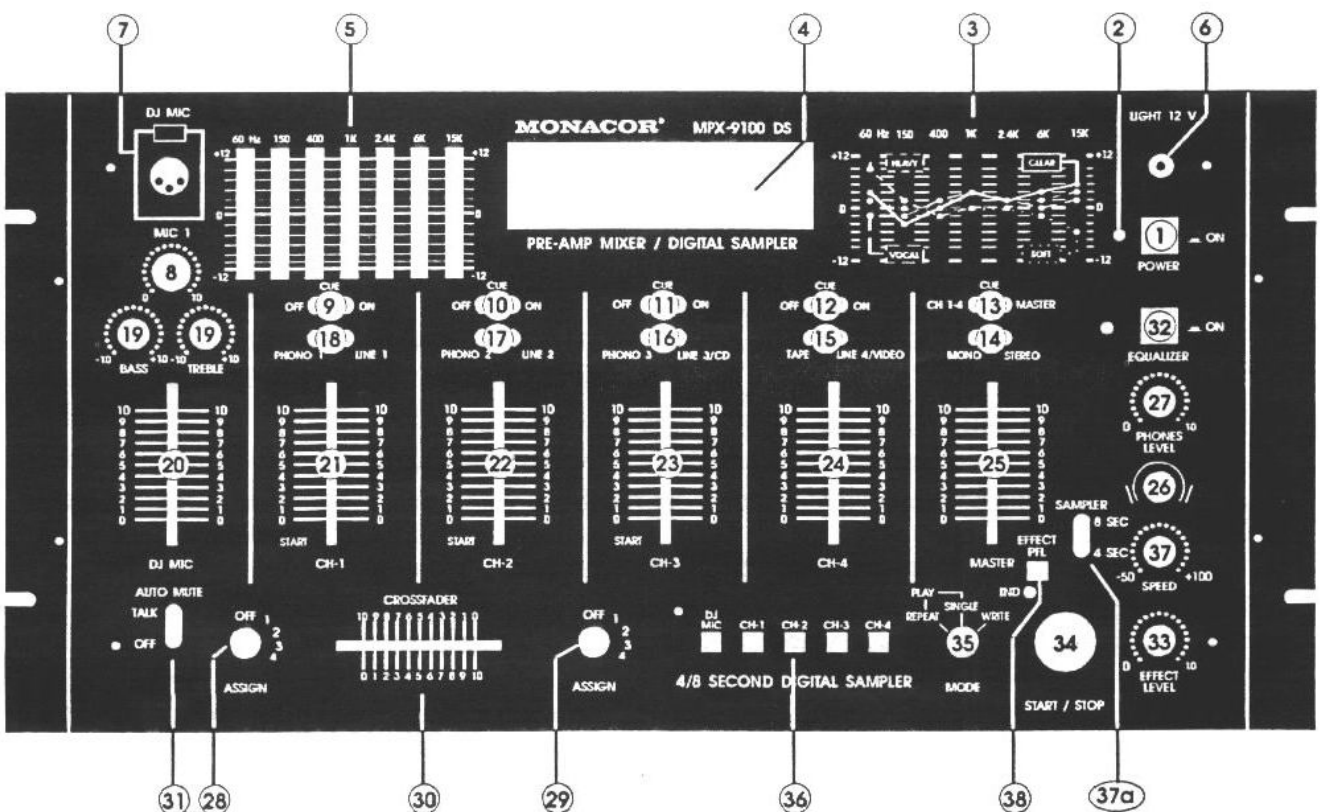
TO PREVENT A SHOCK HAZARD DO NOT OPEN THE CABINET.

AVOID EXCESSIVELY WARM LOCATIONS FOR THE UNIT OR EXTRA HIGH HUMIDITY.

SERVICING SHOULD BE DONE BY AUTHORIZED PERSONNEL ONLY.

THE FRONT PANEL AND ITS ELEMENTS

Fig. 1

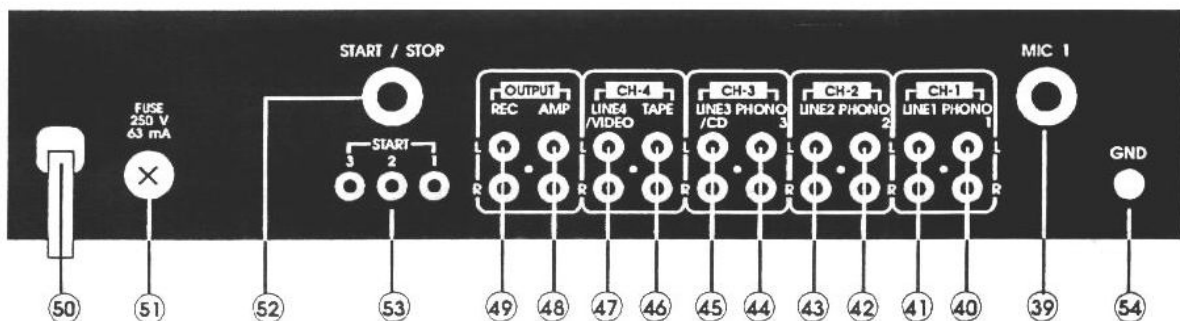


- 1) Power switch: if depressed once, the power is switched on, if depressed again, the power is switched off. All channel controls should be set to minimum before the power switch is depressed. By this strong switching noises are prevented which might cause damage to the ears of near-by standing persons or which at least may damage the speakers.
- 2) Power supply LED
- 3) Diagram of possible equalizer settings.
- 4) 20 step VU meter for the display of output voltages left and right
- 5) 7 way stereo equalizer for the mixer output, to boost or attenuate certain sections of the frequency range. If the controls are set in mid-position, there is no influence on the frequency response. In case of strong bass and treble boosting, pay special attention to the power rating of the speakers of the stereo unit connected.
- 6) BNC jack for a 12 V mixer lamp.
- 7) XLR jack for the DJ microphone (MIC 2)
- 8) Level control (MONO) for the microphone 1
- 9) Pre-fader listening for Channel 1-Fader PHONO 1/LINE 1
- 10) Pre-fader listening for Channel 2-Fader PHONO 2/LINE 2
- 11) Pre-fader listening for Channel 3-Fader PHONO 3/LINE 3 (CD)
- 12) Pre-fader listening for Channel 4-Fader TAPE/LINE 4 (VIDEO)
- 13) Pre-fader listening for the master or the input channels
- 14) Selector switch for STEREO or MONO mixer output
- 15) Selector switch for Channel 4, inputs TAPE or LINE 4 (VIDEO)
- 16) Selector switch for Channel 3, inputs PHONO 3 or LINE 3 (CD)
- 17) Selector switch for Channel 2, inputs PHONO 2 or LINE 2
- 18) Selector switch for Channel 1, inputs PHONO 1 or LINE 1
- 19) Bass and treble controls for the DJ microphone (Mike 2)
- 20) Fader (MONO) for the DJ microphone
- 21) Fader (Stereo) for channel 1, with faderstart
- 22) Fader (Stereo) for channel 2, with faderstart
- 23) Fader (Stereo) for channel 3, with faderstart
- 24) Fader (Stereo) for channel 4
- 25) Fader (Stereo) for the mixer output, master
- 26) 1/4" jack for the low ohm stereo headphones
- 27) Volume control for the headphones
- 28) Assign switch for the left crossfader input
- 29) Assign switch for the right crossfader input
- 30) Crossfader
- 31) Talkover switch -
in OFF position: the DJ microphone works like a normal mono mike.
in TALK position: the programme is automatically attenuated by 12 dB when using the DJ mike.
- 32) Push button for the equalizer in the console output, if depressed, it is in operation, if not depressed, it is not functional
- 33) Level control for the sampler (EFFECT LEVEL)
- 34) START/STOP button for the sampler, used together with the MODE switch (35), is to start and stop the following functions of the MODE switch:
 - A. Mode switch set to WRITE:
By first depressing the START/STOP button the recording is started - the LED next to it lights up .
By depressing the START/STOP button again, the recording is stopped. The LED expires.
 - B. An audio signal has been recorded and the MODE switch is in PLAY position (REPEAT or SINGLE):
By first depressing the START/STOP button, the replay is started, by depressing the START/STOP button again, the replay is stopped.

- 35) MODE, operating mode switch for the sampler:
 Repeat: Repeated replay of a recorded audio signal
 Single: Single replay of a recorded audio signal
 Write: A signal can be recorded.
- 36) Input buttons for the Sampler: one or several fader inputs can be selected as signal source for the sampler recording. The buttons may be depressed in any combination.
- 37) Time control SPEED for the sampler (sample length)
- 37a) Time switch (4 sec/8 sec) for the sampler (sample length)
- 38) Pre-fader listening switch for the sampler (Effect PFL)

REAR PANEL OF THE UNIT

Fig. 2



- 39) 1/4" jack for mike 1
- 40) L/R input PHONO 1
- 41) L/R input LINE 1
- 42) L/R input PHONO 2
- 43) L/R input LINE 2
- 44) L/R input PHONO 3
- 45) L/R input LINE 3 (CD)
- 46) L/R input TAPE (from cassette recorder/DAT/tape)
- 47) L/R input LINE 4 (VIDEO)
- 48) Main output jacks L/R, for the connection to the LINE input of a stereo unit or directly to the input of a power amplifier
- 49) Recorder output jacks L/R for the connection of the recording input of a cassette or DAT recorder
- 50) Mains cable, for the connection to a 230 V mains socket
- 51) Mains fuse
- 52) Connection for a foot switch to control the Sampler START/STOP function.
- 53) 2,5 mm jacks, connected to the fader contacts of the channels 1-3 faders. The contacts are closed when the faders are opened.
ATTENTION! The contacts are not suitable for direct connection of mains voltage. The faderstart is only possible for units provided with a respective low-voltage control input.
- 54) Ground screw for phono units, in case of hum problems the ground of the record player can here be connected.

Setting into operation

All necessary connections are to be carried out prior to connecting the mixer to the mains socket. Use only screened cable.

Prior to switching on the mixer, the faders are set to minimum position and the input switches above the faders are set to the respective position.

After connection to a mains socket, the stereo mixer is switched on with the power switch (1), the music sources are started, the master fader is set to standard position and the faders are carefully slid up.

The equalizer is set according to request, the diagram (3) can be of assistance.

The sampler operation

Recording:

To record a signal, the MODE switch (35) is set to WRITE and the signal source is selected with the input buttons (36) of the sampler.

The time control should be set to the mid-position 0 for the first trials.

Now starting and stopping of the recording can be set with the Start/Stop button (34) or instead with a foot switch. (By first depressing = start, by second depressing = stop).

Replay:

To replay a recorded signal, the MODE switch (35) is set to SINGLE for a single replay or to REPEAT for repeated replay.

Now by depressing the START/STOP button the replay can be started and stopped again.

If the time switch 4/8 sec and the time control SPEED remain unchanged during recording and replay, then the replay of the recorded signal remains in the same pitch.

If the preferred mid-position 0 was selected during recording, then the recorded signal can be shortened or extended by the time control SPEED during the replay. The pitch changes from too high (Mickey Mouse) to normal and too low.

If, however, the time control SPEED was set to a stop position (+ or -) during recording, then the signal can only be shortened or only be extended during replay (according to the stop position selected).

Accordingly the position of the time control 4/8 sec. has to be noted during recording and replay.

Specifications

Inputs	:	MIC 1,2	1 mV/ 1 k Ω
	:	PHONO	3 mV/50 k Ω
	:	LINE/CD/VIDEO/TAPE	150 mV/27 k Ω
Outputs	:	MASTER	1,55 V, 6,5 V max., 600 Ω
	:	REC	250 mV/600 Ω
Frequency Range	:	20 - 20 000 Hz, \pm 3 dB	
THD	:	0,1 %	
S/N ratio	:	58 dB	
Graphic Equalizer	:	60/150/400 Hz/1/2,4/6/15 kHz \pm 12 dB	
Sampler	:	12 sec. max., adjustable	
Headphones Output	:	\geq 8 Ω	
Talkover	:	- 12 dB	
Faderstart	:	contact rating 24 VDC/500 mA max.	
Power Supply	:	230 V AC, 50/60 Hz, 12 VA	
Dimensions	:	W 482 x H 115 x D 240 mm	
Weight	:	4,9 kg	

Specifications are according to the manufacturer and are subject to change without prior notice.